



5 STEPS TO PLANTING YOUR NEW Narrowleaf Milkweed plants

(*Asclepias fascicularis*)

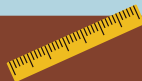
1



Install your milkweed
within 7 days



2



Plant milkweed 3 ft. apart, no
more than 10 ft. between
plants (caterpillar crawling
distance!)

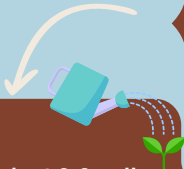
3



Plant in full sun
or partial shade



4



Give each plant 2-3 gallons
of water, wait one week,
then give 2-3 gallons of
water again



5

NOVEMBER

Water 1 to 2 times a
week until November

COME VOLUNTEER AT OUR NATIVE NURSERY!



VOLUNTEER REGISTRATION



For more information contact
Antonio Sanchez at
antoniosanchez@samofund.org or
visit www.samofund.org/milkweed



Help Support Our Work & Donate Here

